

# Beach Rules

# Safety Tips



All county parks, including river and beach access points, shall be closed between one hour after sunset and one hour before sunrise. No beach setups prior to 7am.



No fires



No overnight camping



No glass



No Smoking, Vaping, Alcohol, Drugs, or Weapons



No animals



No fireworks

## Keep our beaches clean + friendly



- No setting up before 7:00 am
- Tents are limited to 10' x 10'
- Items left on the beach overnight will be removed



No fighting, profanity, or disorderly conduct

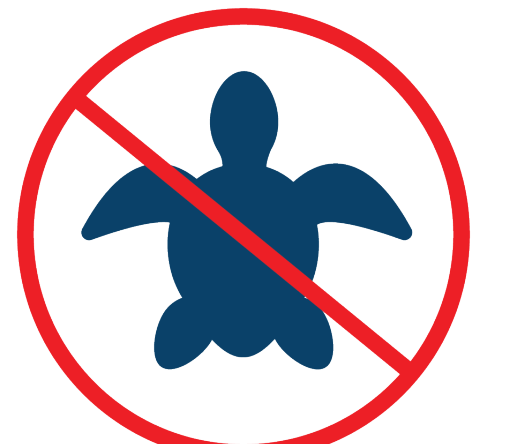


No littering



No sound amplification

## Be a good beach citizen



No harassing sea turtles



No removal of beach sand or digging holes larger than 3' wide x 2' deep



Stay off dunes



No white lights at night

## Don't forget



No vehicles on beach



Beach wheelchairs  
850-259-4131



No overnight parking, parking on shoulder or roadway



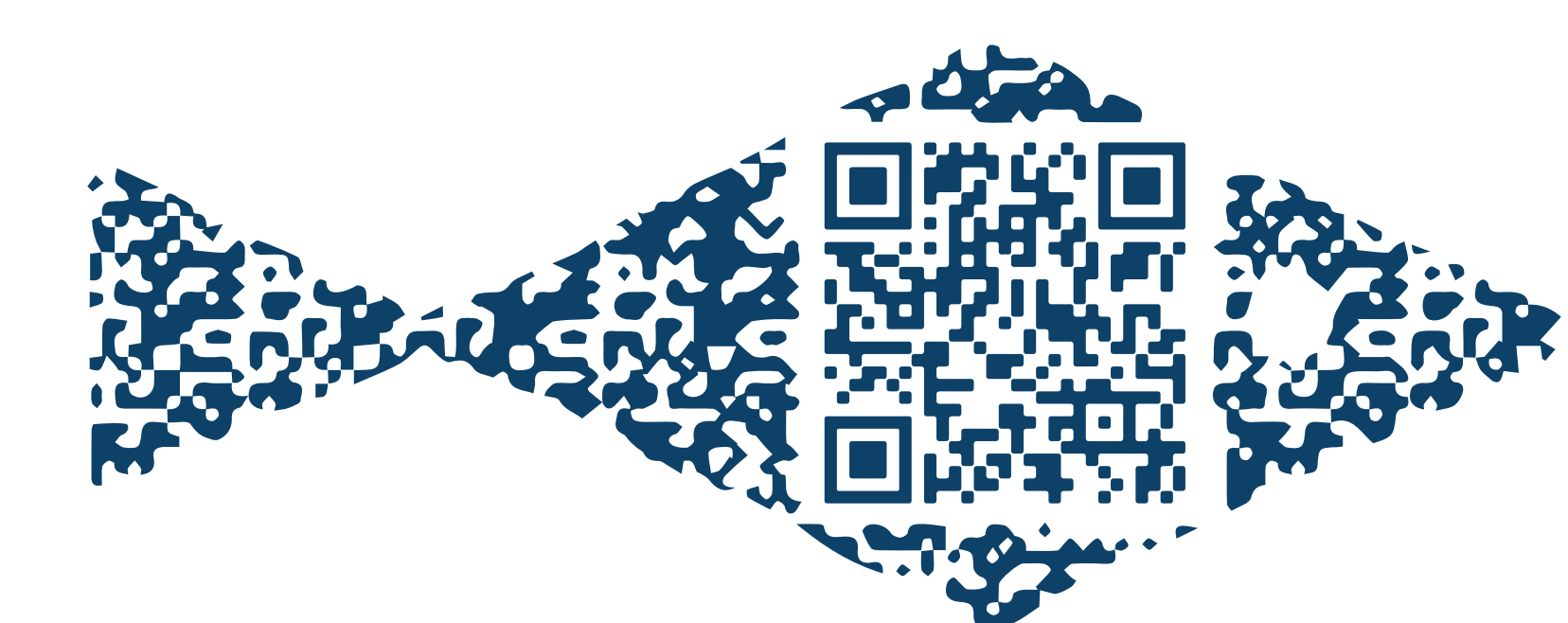
Lock your vehicle



No commercial activities or soliciting without permit



Special events must be coordinated through Okaloosa County



Scan for more info

## FLAG WARNING SYSTEM



**Water closed**

Water Activity is prohibited



**Moderate surf/currents**

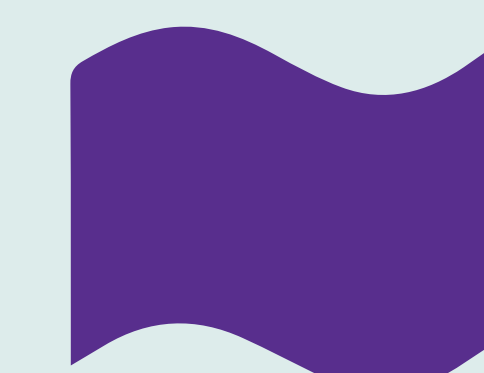


**Calm conditions**



**High Hazard**

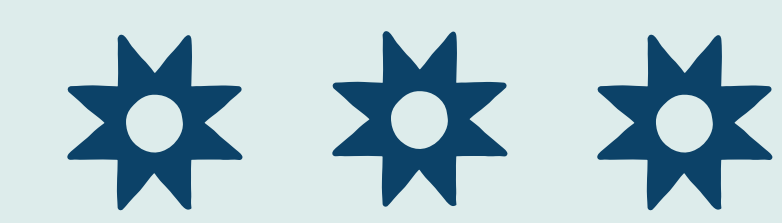
Knee deep is too deep



**Dangerous marine life**

Absence of flags does not assure safe waters.

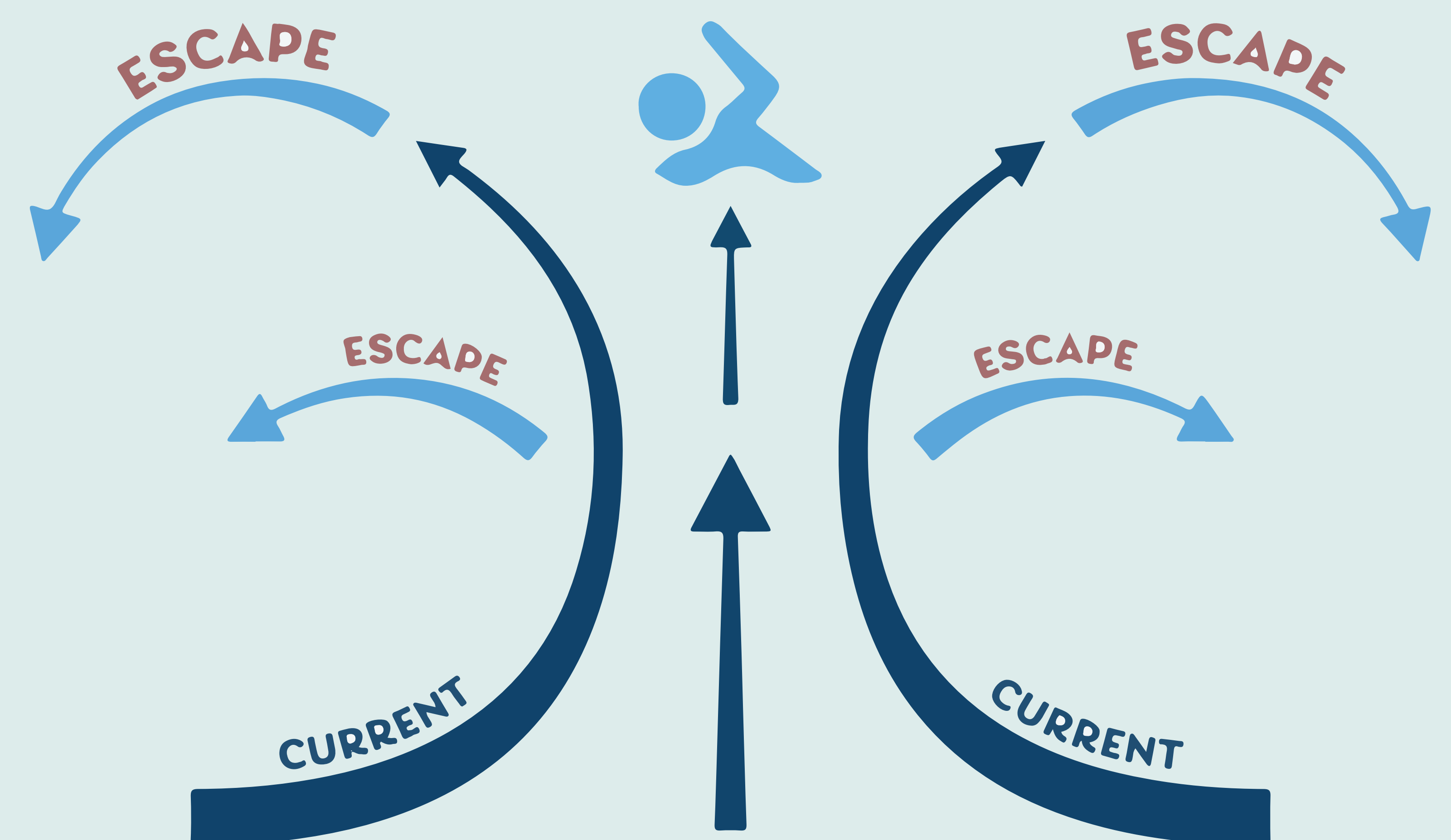
**Swim at your own risk.**



**Text "BEACH" to 44144 for water conditions updates**

## RIP CURRENT

A rip current is a powerful channel of water flowing away from shore.



### RIP CURRENT

If caught in a rip current do not swim against it  
**Swim parallel to the shore**

Swim out of the current then swim at an angle or toward the shore

If you can't escape, float or calmly tread water

Face the shore, **stay calm**, wave your arms and yell for help



**DESTIN  
FORT  
WALTON  
BEACH  
FLORIDA**

